

Blue Explorer

Blue Explorer is a simple file transfer application which makes it possible to send files between a Bluetooth master device and a Bluetooth slave device. Either USB or UART can be used for the application. When the application is started, the Blue Explorer window is opened. From the explorer it is possible to browse among the local files of the computer and to search the neighbourhood for other Bluetooth devices. An RFCOMM-connection can then be set up to any other found device that is running Blue Explorer. When two devices are connected, files can be sent from any of the two computers to the other.

Installation

The zip-file that you have down loaded contains only the Blue Explorer application. To be able to run the application you need to have Ericsson Bluetooth Application Toolkit (EBAK) installed on two computers:

- ✂ Connect one Bluetooth module to each computer. You can use either the USB -cable or the UART -cable to communicate with the module. If you want to use UART and have two COM-ports on your computer, choose COM 2. (If UART is used, the USB -cable must be used for power supply.)
- ✂ Use the CD that was included when you bought the kit to install the EBAK software on both computers. Use the document Getting Started if you run into trouble.
- ✂ Create a directory for the Blue Explorer files.
- ✂ Unzip BlueExplorer.zip in the created directory. The application has two sub directories, **exe** which contain the executable file and **source**, which contain the source code for Blue Explorer.

How to start Blue Explorer

The following steps should be done on both computers:

- ✂ Press the reset button on the Bluetooth module.
- ✂ Go to the directory .../Blue Explorer/exe and run Blue_Explorer.exe.

If the error message below appears, then the COMServer.exe is not registered.



Check in the task manager for a process called BT_COM~1.exe or BT_COMServer.exe and end the process.

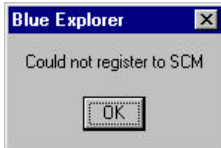
Hardware reset the Bluetooth device.

Open a DOS window. Run "`<bt-executable path>Bt_comserver.exe/RegServer`". This should result in the dialogue box below:



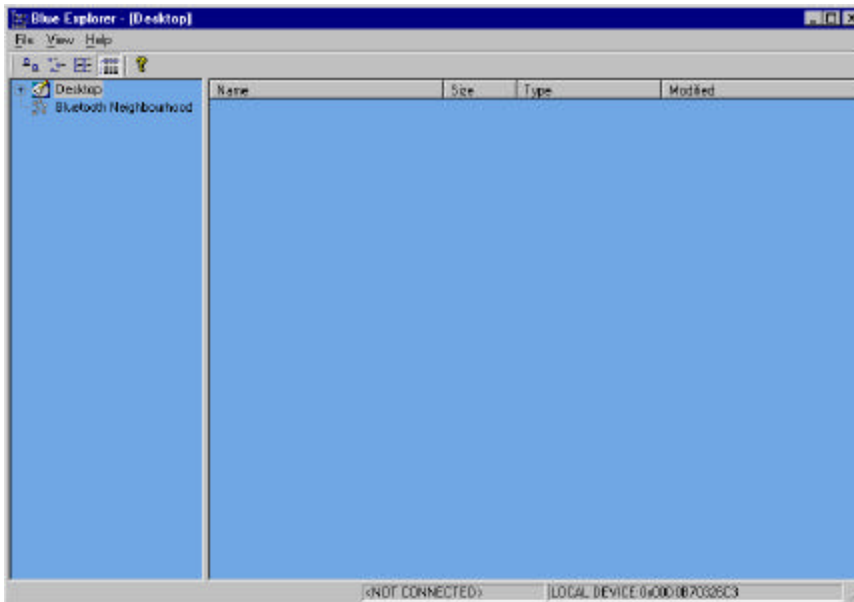
Restart Blue_Explorer.exe on both computers.

If the dialogue box below appears, then a previous process of BT_COMServer.exe is running.



To solve the problem, close the application and use the task manager to end the process BT_COM~1.exe and/or BT_COMServer.exe. Start the Blue Explorer application again. If the problem remains, end the above processes and do a hardware reset on the Bluetooth device.

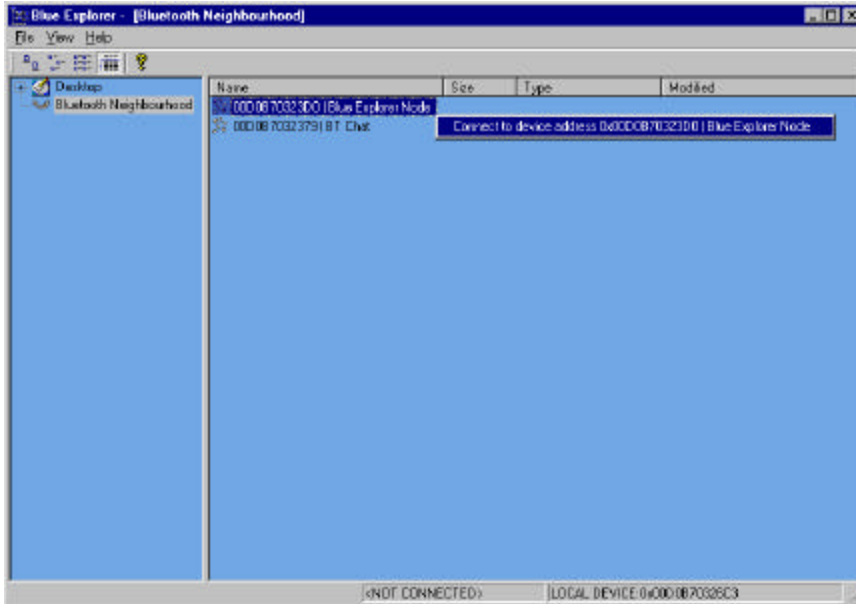
When succeeded, the following window appears:



If you are using USB to connect to your Bluetooth module, verify that the LOCAL DEVICE field at the right bottom of the window has a value. If not, reboot your computer and try again.

How to set up a connection

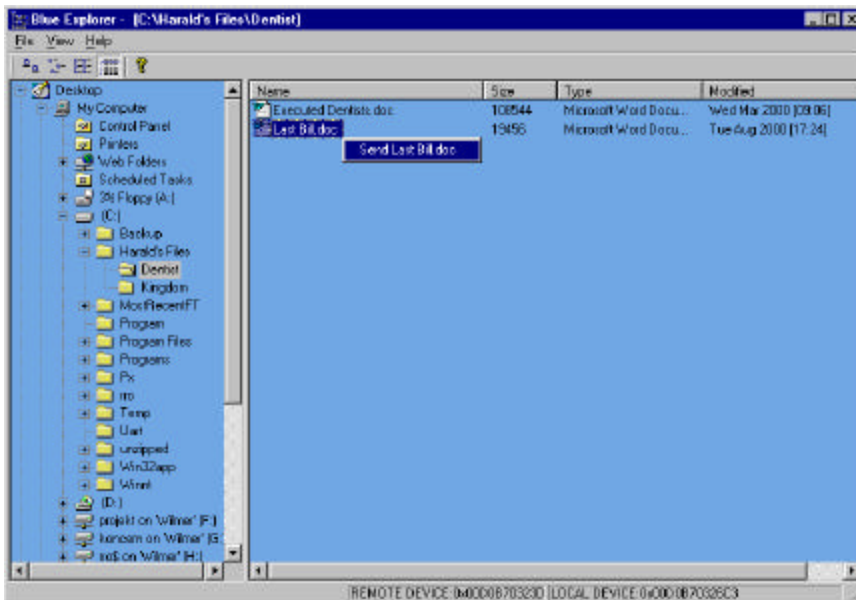
Click on Bluetooth Neighbourhood. The device will now search the area for other devices and list them in the right part of the window. To connect to the other device, click on the device address and choose Connect to device address <address>.



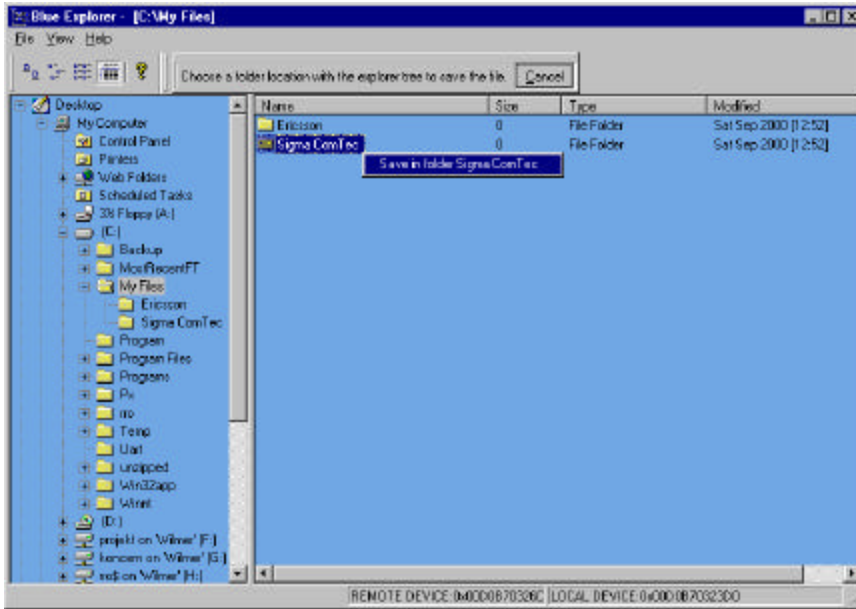
The remote device address is displayed at the bottom of the window when the connection has been established.

How to send a file

When a connection has been established files can be sent either from the connecting side or the connected side. Use the left side of the Blue Explorer window to navigate yourself down to the folder that contains the file you want to transfer. The file should now be visible in the right side of the window. Click on the file and choose Send *<filename>*.

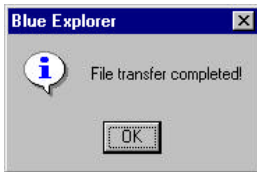


A message bar, telling you to choose a folder to store the file in, appears on the receiving computer. Use the left side of the Blue Explorer window and navigate so that the folder you want to use is shown in the right side of the window. Click on the folder and choose Save in folder *<folder name>*.



The file transfer starts when you have selected a folder. The file transfer protocol is self made and uses DM5 packets to transfer data between the modules. The file data transfer rate is approximately 45 kbps when both computers use USB. If UART is used by one or both computers the file data transfer rate is approximately 30 kbps.

The following message is displayed when the file transfer is completed:



Disconnection

To end the connection to another computer, choose `Disconnect` in the file menu. Disconnection is completed when the status bar at the bottom of the window shows `<NO CONNECTION>`. The application is then ready to make a new connection.